

# RUNWAY S OnOff

“When designing Runway, we took a holistic approach, starting from the effect of lighting by creating a family of both linear lighting - creating general light and spotlights - creating accent lighting. Tying it all together with the golden proportions, curvatures and connectivity. Design worthy the attention of a fashion runway.”

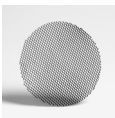
LED-spotlight with passive cooling system.  
Die cast aluminium body, powder coat painted.  
Integral heatsink. Premium in-track driver.  
Low ripple output current <4% to assure camera and scanner friendly performance.  
Rotation 355°. Vertical adjustment +/- 90°.  
Track mounted with 3-circuit universal adapter.



<b>Class of protection</b>	IP20, class I
<b>Colours</b>	White, black
<b>Weight total</b>	700g
<b>Reflector</b>	High purity MRO segmented
<b>Lifetime LED</b>	100 000h L90/B50 at Ta 25°C
<b>Driver h/max failure</b>	50 000h/10% at Ta 25°C
<b>Mounting</b>	3-circuit universal driver-adapter
<b>Voltage</b>	220-240V 50/60hz
<b>Qty/MCB 16A type B</b>	Max 60pcs (16W) - 36pcs (28W)
<b>Ripple out. current</b>	< 4%. Flicker-free performance
<b>Colour consistency</b>	2 SDCM
<b>Photobiological safety</b>	RG1
<b>Design</b>	Jesper Ståhl
<b>Dimming</b>	Not dimmable

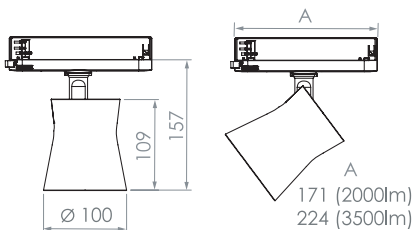


- White
- Black



## Accessories

Honeycomb louvre	225091
------------------	--------



# RUNWAY S OnOff



Description	Reflector	CCT (K)	CRI	Lumen	Load	Lumen	Lm/W	○ White	● Black
LIGHTSOURCE					LUMINAIRE			ART. No.	
WARM WHITE 3000K (930)									
RUNWAY S OnOff 2000lm SP 930	Spot 15°	3000K	92	2320	16W	2180	136	225110	225114
RUNWAY S OnOff 2000lm ME 930	Medium 25°	3000K	92	2320	16W	2180	136	225111	225115
RUNWAY S OnOff 2000lm FL 930	Flood 40°	3000K	92	2320	16W	2180	136	225112	225116
RUNWAY S OnOff 2000lm WFL 930	Widefl. 60°	3000K	92	2320	16W	2180	136	225113	225117
RUNWAY S OnOff 3500lm SP 930	Spot 15°	3000K	92	4040	28W	3790	136	225210	225214
RUNWAY S OnOff 3500lm ME 930	Medium 25°	3000K	92	4040	28W	3790	136	225211	225215
RUNWAY S OnOff 3500lm FL 930	Flood 40°	3000K	92	4040	28W	3790	136	225212	225216
RUNWAY S OnOff 3500lm WFL 930	Widefl. 60°	3000K	92	4040	28W	3790	136	225213	225217
NEUTRAL WHITE 4000K (940)									
RUNWAY S OnOff 2000lm SP 940	Spot 15°	4000K	92	2330	16W	2185	137	225150	225154
RUNWAY S OnOff 2000lm ME 940	Medium 25°	4000K	92	2330	16W	2185	137	225151	225155
RUNWAY S OnOff 2000lm FL 940	Flood 40°	4000K	92	2330	16W	2185	137	225152	225156
RUNWAY S OnOff 2000lm WFL 940	Widefl. 60°	4000K	92	2330	16W	2185	137	225153	225157
RUNWAY S OnOff 3500lm SP 940	Spot 15°	4000K	92	4140	28W	3890	139	225250	225254
RUNWAY S OnOff 3500lm ME 940	Medium 25°	4000K	92	4140	28W	3890	139	225251	225255
RUNWAY S OnOff 3500lm FL 940	Flood 40°	4000K	92	4140	28W	3890	139	225252	225256
RUNWAY S OnOff 3500lm WFL 940	Widefl. 60°	4000K	92	4140	28W	3890	139	225253	225257
WARM WHITE 2700K (927)									
RUNWAY S OnOff 2000lm SP 927	Spot 15°	2700K	92	2235	16W	2105	131	225120	225124
RUNWAY S OnOff 2000lm ME 927	Medium 25°	2700K	92	2235	16W	2105	131	225121	225125
RUNWAY S OnOff 2000lm FL 927	Flood 40°	2700K	92	2235	16W	2105	131	225122	225126
RUNWAY S OnOff 2000lm WFL 927	Widefl. 60°	2700K	92	2235	16W	2105	131	225123	225127
RUNWAY S OnOff 3500lm SP 927	Spot 15°	2700K	92	3870	28W	3640	130	225220	225224
RUNWAY S OnOff 3500lm ME 927	Medium 25°	2700K	92	3870	28W	3640	130	225221	225225
RUNWAY S OnOff 3500lm FL 927	Flood 40°	2700K	92	3870	28W	3640	130	225222	225226
RUNWAY S OnOff 3500lm WFL 927	Widefl. 60°	2700K	92	3870	28W	3640	130	225223	225227
Spectral power distributions									
3000K 930				4000K 940				2700K 927	

Luminous flux and connected electrical load are subject to an initial tolerance of +/- 5%. Tolerance of colour temperature: +/-150 K. Tolerance of CRI +/- 1,5. Values apply to an ambient temperature of 25°C.