

# RUNWAY S Connect

"When designing Runway, we took a holistic approach, starting from the effect of lighting by creating a family of both linear lighting - creating general light and spotlights - creating accent lighting. Tying it all together with the golden proportions, curvatures and connectivity. Design worthy the attention of a fashion runway."

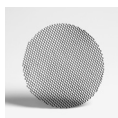
LED-spotlight with passive cooling system.  
Die cast aluminium body, powder coat painted.  
Integral heatsink. Premium in-track driver.  
Low ripple output current <4% to assure camera and scanner friendly performance.  
Rotation 355°. Vertical adjustment +/- 90°.  
Track mounted with 3-circuit universal adapter.  
Wireless dimming and control by Philips Masterconnect app, switches and sensors.



<b>Class of protection</b>	IP20, class I
<b>Colours</b>	White, black
<b>Weight total</b>	700g
<b>Reflector</b>	High purity MRO segmented
<b>Lifetime LED</b>	100 000h L90/B50 at Ta 25°C
<b>Driver h/max failure</b>	50 000h/10% at Ta 25°C
<b>Mounting</b>	3-circuit universal driver-adapter
<b>Voltage</b>	220-240V 50/60hz
<b>Qty/MCB 16A type B</b>	Max 60pcs (16W) - 36pcs (28W)
<b>Ripple out. current</b>	< 4%. Flicker-free performance
<b>Colour consistency</b>	2 SDCM
<b>Photobiological safety</b>	RG1
<b>Design</b>	Jesper Ståhl
<b>Dimming</b>	100-1% wireless MasterConnect

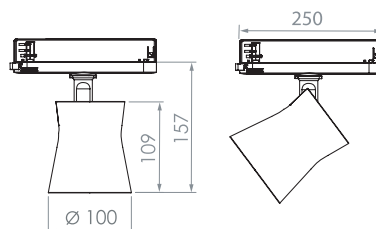


- ☐ White  
☒ Black



## Accessories

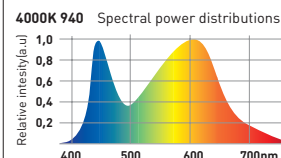
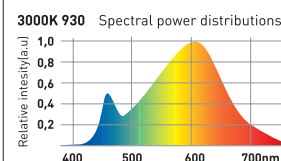
Honeycomb louvre **225091**



# RUNWAY S Connect



Description	Reflector	CCT (K)	CRI	Lumen	Load	Lumen	Lm/W	○ White	● Black																																																																																																																																																																																																							
LIGHTSOURCE					LUMINAIRE			ART. No.																																																																																																																																																																																																								
WARM WHITE 3000K (930)																																																																																																																																																																																																																
RUNWAY S MC 2000lm SP 930	Spot 15°	3000K	92	2320	16W	2180	136	225710	225714																																																																																																																																																																																																							
RUNWAY S MC 2000lm ME 930	Medium 25°	3000K	92	2320	16W	2180	136	225711	225715																																																																																																																																																																																																							
RUNWAY S MC 2000lm FL 930	Flood 40°	3000K	92	2320	16W	2180	136	225712	225716																																																																																																																																																																																																							
RUNWAY S MC 2000lm WFL 930	Widefl. 60°	3000K	92	2320	16W	2180	136	225713	225717																																																																																																																																																																																																							
RUNWAY S MC 3500lm SP 930	Spot 15°	3000K	92	4040	28W	3790	136	225810	225814																																																																																																																																																																																																							
RUNWAY S MC 3500lm ME 930	Medium 25°	3000K	92	4040	28W	3790	136	225811	225815																																																																																																																																																																																																							
RUNWAY S MC 3500lm FL 930	Flood 40°	3000K	92	4040	28W	3790	136	225812	225816																																																																																																																																																																																																							
RUNWAY S MC 3500lm WFL 930	Widefl. 60°	3000K	92	4040	28W	3790	136	225813	225817																																																																																																																																																																																																							
<table><tr><th colspan="4">Spot</th><th colspan="4">Medium</th><th colspan="4">Flood</th><th colspan="4">Wideflood</th></tr><tr><th>m</th><th>Ø</th><th>2000lm</th><th>3500lm</th><th>Lux</th><th>Lux</th><th>m</th><th>Ø</th><th>2000lm</th><th>3500lm</th><th>Lux</th><th>Lux</th><th>m</th><th>Ø</th><th>2000lm</th><th>3500lm</th><th>Lux</th><th>Lux</th></tr><tr><td>1</td><td>0,28</td><td>14169</td><td>25543</td><td></td><td></td><td>1</td><td>0,42</td><td>7887</td><td>13663</td><td></td><td></td><td>1</td><td>0,74</td><td>4971</td><td>8611</td><td></td><td></td></tr><tr><td>2</td><td>0,56</td><td>3542</td><td>6136</td><td></td><td></td><td>2</td><td>0,84</td><td>1972</td><td>3416</td><td></td><td></td><td>2</td><td>1,42</td><td>1243</td><td>2153</td><td></td><td></td></tr><tr><td>3</td><td>0,84</td><td>1574</td><td>2727</td><td></td><td></td><td>3</td><td>1,25</td><td>876</td><td>1518</td><td></td><td></td><td>3</td><td>2,18</td><td>552</td><td>957</td><td></td><td></td></tr><tr><td>4</td><td>1,12</td><td>886</td><td>1596</td><td></td><td></td><td>4</td><td>1,70</td><td>792</td><td>854</td><td></td><td></td><td>4</td><td>2,91</td><td>311</td><td>538</td><td></td><td></td></tr></table>					Spot				Medium				Flood				Wideflood				m	Ø	2000lm	3500lm	Lux	Lux	m	Ø	2000lm	3500lm	Lux	Lux	m	Ø	2000lm	3500lm	Lux	Lux	1	0,28	14169	25543			1	0,42	7887	13663			1	0,74	4971	8611			2	0,56	3542	6136			2	0,84	1972	3416			2	1,42	1243	2153			3	0,84	1574	2727			3	1,25	876	1518			3	2,18	552	957			4	1,12	886	1596			4	1,70	792	854			4	2,91	311	538			<table><tr><th colspan="4">2000lm</th><th colspan="4">3500lm</th></tr><tr><td>m</td><td>Ø</td><td>Lux</td><td>Lux</td><td>m</td><td>Ø</td><td>Lux</td><td>Lux</td><td>m</td><td>Ø</td><td>Lux</td><td>Lux</td><td>m</td><td>Ø</td><td>Lux</td><td>Lux</td></tr><tr><td>1</td><td>0,28</td><td>14169</td><td>25543</td><td>1</td><td>0,42</td><td>7887</td><td>13663</td><td>1</td><td>0,74</td><td>4971</td><td>8611</td><td>1</td><td>1,19</td><td>2404</td><td>4164</td></tr><tr><td>2</td><td>0,56</td><td>3542</td><td>6136</td><td>2</td><td>0,84</td><td>1972</td><td>3416</td><td>2</td><td>1,42</td><td>1243</td><td>2153</td><td>2</td><td>2,38</td><td>601</td><td>1041</td></tr><tr><td>3</td><td>0,84</td><td>1574</td><td>2727</td><td>3</td><td>1,25</td><td>876</td><td>1518</td><td>3</td><td>2,18</td><td>552</td><td>957</td><td>2,5</td><td>2,97</td><td>267</td><td>666</td></tr><tr><td>4</td><td>1,12</td><td>886</td><td>1596</td><td>4</td><td>1,70</td><td>792</td><td>854</td><td>4</td><td>2,91</td><td>311</td><td>538</td><td>3</td><td>3,56</td><td>150</td><td>463</td></tr></table>					2000lm				3500lm				m	Ø	Lux	Lux	m	Ø	Lux	Lux	m	Ø	Lux	Lux	m	Ø	Lux	Lux	1	0,28	14169	25543	1	0,42	7887	13663	1	0,74	4971	8611	1	1,19	2404	4164	2	0,56	3542	6136	2	0,84	1972	3416	2	1,42	1243	2153	2	2,38	601	1041	3	0,84	1574	2727	3	1,25	876	1518	3	2,18	552	957	2,5	2,97	267	666	4	1,12	886	1596	4	1,70	792	854	4	2,91	311	538	3	3,56	150	463	<p>3000K 930 Spectral power distributions</p>				
Spot				Medium				Flood				Wideflood																																																																																																																																																																																																				
m	Ø	2000lm	3500lm	Lux	Lux	m	Ø	2000lm	3500lm	Lux	Lux	m	Ø	2000lm	3500lm	Lux	Lux																																																																																																																																																																																															
1	0,28	14169	25543			1	0,42	7887	13663			1	0,74	4971	8611																																																																																																																																																																																																	
2	0,56	3542	6136			2	0,84	1972	3416			2	1,42	1243	2153																																																																																																																																																																																																	
3	0,84	1574	2727			3	1,25	876	1518			3	2,18	552	957																																																																																																																																																																																																	
4	1,12	886	1596			4	1,70	792	854			4	2,91	311	538																																																																																																																																																																																																	
2000lm				3500lm																																																																																																																																																																																																												
m	Ø	Lux	Lux	m	Ø	Lux	Lux	m	Ø	Lux	Lux	m	Ø	Lux	Lux																																																																																																																																																																																																	
1	0,28	14169	25543	1	0,42	7887	13663	1	0,74	4971	8611	1	1,19	2404	4164																																																																																																																																																																																																	
2	0,56	3542	6136	2	0,84	1972	3416	2	1,42	1243	2153	2	2,38	601	1041																																																																																																																																																																																																	
3	0,84	1574	2727	3	1,25	876	1518	3	2,18	552	957	2,5	2,97	267	666																																																																																																																																																																																																	
4	1,12	886	1596	4	1,70	792	854	4	2,91	311	538	3	3,56	150	463																																																																																																																																																																																																	
NEUTRAL WHITE 4000K (940)																																																																																																																																																																																																																
RUNWAY S MC 2000lm SP 940	Spot 15°	4000K	92	2330	16W	2185	137	225750	225754																																																																																																																																																																																																							
RUNWAY S MC 2000lm ME 940	Medium 25°	4000K	92	2330	16W	2185	137	225751	225755																																																																																																																																																																																																							
RUNWAY S MC 2000lm FL 940	Flood 40°	4000K	92	2330	16W	2185	137	225752	225756																																																																																																																																																																																																							
RUNWAY S MC 2000lm WFL 940	Widefl. 60°	4000K	92	2330	16W	2185	137	225753	225757																																																																																																																																																																																																							
RUNWAY S MC 3500lm SP 940	Spot 15°	4000K	92	4140	28W	3890	139	225850	225854																																																																																																																																																																																																							
RUNWAY S MC 3500lm ME 940	Medium 25°	4000K	92	4140	28W	3890	139	225851	225855																																																																																																																																																																																																							
RUNWAY S MC 3500lm FL 940	Flood 40°	4000K	92	4140	28W	3890	139	225852	225856																																																																																																																																																																																																							
RUNWAY S MC 3500lm WFL 940	Widefl. 60°	4000K	92	4140	28W	3890	139	225853	225857																																																																																																																																																																																																							
<table><tr><th colspan="4">Spot</th><th colspan="4">Medium</th><th colspan="4">Flood</th><th colspan="4">Wideflood</th></tr><tr><th>m</th><th>Ø</th><th>2000lm</th><th>3500lm</th><th>Lux</th><th>Lux</th><th>m</th><th>Ø</th><th>2000lm</th><th>3500lm</th><th>Lux</th><th>Lux</th><th>m</th><th>Ø</th><th>2000lm</th><th>3500lm</th><th>Lux</th><th>Lux</th></tr><tr><td>1</td><td>0,28</td><td>15545</td><td>25249</td><td></td><td></td><td>1</td><td>0,42</td><td>8097</td><td>14055</td><td></td><td></td><td>1</td><td>0,74</td><td>5103</td><td>8859</td><td></td><td></td></tr><tr><td>2</td><td>0,56</td><td>3636</td><td>6312</td><td></td><td></td><td>2</td><td>0,84</td><td>2024</td><td>3514</td><td></td><td></td><td>2</td><td>1,42</td><td>1276</td><td>2215</td><td></td><td></td></tr><tr><td>3</td><td>0,84</td><td>1616</td><td>2805</td><td></td><td></td><td>3</td><td>1,25</td><td>900</td><td>1562</td><td></td><td></td><td>3</td><td>2,18</td><td>567</td><td>984</td><td></td><td></td></tr><tr><td>4</td><td>1,12</td><td>972</td><td>1578</td><td></td><td></td><td>4</td><td>1,70</td><td>506</td><td>878</td><td></td><td></td><td>4</td><td>2,91</td><td>319</td><td>554</td><td></td><td></td></tr></table>					Spot				Medium				Flood				Wideflood				m	Ø	2000lm	3500lm	Lux	Lux	m	Ø	2000lm	3500lm	Lux	Lux	m	Ø	2000lm	3500lm	Lux	Lux	1	0,28	15545	25249			1	0,42	8097	14055			1	0,74	5103	8859			2	0,56	3636	6312			2	0,84	2024	3514			2	1,42	1276	2215			3	0,84	1616	2805			3	1,25	900	1562			3	2,18	567	984			4	1,12	972	1578			4	1,70	506	878			4	2,91	319	554			<table><tr><th colspan="4">2000lm</th><th colspan="4">3500lm</th></tr><tr><td>m</td><td>Ø</td><td>Lux</td><td>Lux</td><td>m</td><td>Ø</td><td>Lux</td><td>Lux</td><td>m</td><td>Ø</td><td>Lux</td><td>Lux</td><td>m</td><td>Ø</td><td>Lux</td><td>Lux</td></tr><tr><td>1</td><td>0,28</td><td>15545</td><td>25249</td><td>1</td><td>0,42</td><td>8097</td><td>14055</td><td>1</td><td>0,74</td><td>5103</td><td>8859</td><td>1</td><td>1,19</td><td>2468</td><td>4284</td></tr><tr><td>2</td><td>0,56</td><td>3636</td><td>6312</td><td>2</td><td>0,84</td><td>2024</td><td>3514</td><td>2</td><td>1,42</td><td>1276</td><td>2215</td><td>2</td><td>2,38</td><td>617</td><td>1071</td></tr><tr><td>3</td><td>0,84</td><td>1616</td><td>2805</td><td>3</td><td>1,25</td><td>900</td><td>1562</td><td>3</td><td>2,18</td><td>567</td><td>984</td><td>2,5</td><td>2,97</td><td>395</td><td>685</td></tr><tr><td>4</td><td>1,12</td><td>972</td><td>1578</td><td>4</td><td>1,70</td><td>506</td><td>878</td><td>4</td><td>2,91</td><td>319</td><td>554</td><td>3</td><td>3,56</td><td>274</td><td>476</td></tr></table>					2000lm				3500lm				m	Ø	Lux	Lux	m	Ø	Lux	Lux	m	Ø	Lux	Lux	m	Ø	Lux	Lux	1	0,28	15545	25249	1	0,42	8097	14055	1	0,74	5103	8859	1	1,19	2468	4284	2	0,56	3636	6312	2	0,84	2024	3514	2	1,42	1276	2215	2	2,38	617	1071	3	0,84	1616	2805	3	1,25	900	1562	3	2,18	567	984	2,5	2,97	395	685	4	1,12	972	1578	4	1,70	506	878	4	2,91	319	554	3	3,56	274	476	<p>4000K 940 Spectral power distributions</p>				
Spot				Medium				Flood				Wideflood																																																																																																																																																																																																				
m	Ø	2000lm	3500lm	Lux	Lux	m	Ø	2000lm	3500lm	Lux	Lux	m	Ø	2000lm	3500lm	Lux	Lux																																																																																																																																																																																															
1	0,28	15545	25249			1	0,42	8097	14055			1	0,74	5103	8859																																																																																																																																																																																																	
2	0,56	3636	6312			2	0,84	2024	3514			2	1,42	1276	2215																																																																																																																																																																																																	
3	0,84	1616	2805			3	1,25	900	1562			3	2,18	567	984																																																																																																																																																																																																	
4	1,12	972	1578			4	1,70	506	878			4	2,91	319	554																																																																																																																																																																																																	
2000lm				3500lm																																																																																																																																																																																																												
m	Ø	Lux	Lux	m	Ø	Lux	Lux	m	Ø	Lux	Lux	m	Ø	Lux	Lux																																																																																																																																																																																																	
1	0,28	15545	25249	1	0,42	8097	14055	1	0,74	5103	8859	1	1,19	2468	4284																																																																																																																																																																																																	
2	0,56	3636	6312	2	0,84	2024	3514	2	1,42	1276	2215	2	2,38	617	1071																																																																																																																																																																																																	
3	0,84	1616	2805	3	1,25	900	1562	3	2,18	567	984	2,5	2,97	395	685																																																																																																																																																																																																	
4	1,12	972	1578	4	1,70	506	878	4	2,91	319	554	3	3,56	274	476																																																																																																																																																																																																	
WARM WHITE 2700K (927)																																																																																																																																																																																																																
RUNWAY S MC 2000lm SP 927	Spot 15°	2700K	92	2235	16W	2105	131	225720	225724																																																																																																																																																																																																							
RUNWAY S MC 2000lm ME 927	Medium 25°	2700K	92	2235	16W	2105	131	225721	225725																																																																																																																																																																																																							
RUNWAY S MC 2000lm FL 927	Flood 40°	2700K	92	2235	16W	2105	131	225722	225726																																																																																																																																																																																																							
RUNWAY S MC 2000lm WFL 927	Widefl. 60°	2700K	92	2235	16W	2105	131	225723	225727																																																																																																																																																																																																							
RUNWAY S MC 3500lm SP 927	Spot 15°	2700K	92	3870	28W	3640	130	225820	225824																																																																																																																																																																																																							
RUNWAY S MC 3500lm ME 927	Medium 25°	2700K	92	3870	28W	3640	130	225821	225825																																																																																																																																																																																																							
RUNWAY S MC 3500lm FL 927	Flood 40°	2700K	92	3870	28W	3640	130	225822	225826																																																																																																																																																																																																							
RUNWAY S MC 3500lm WFL 927	Widefl. 60°	2700K	92	3870	28W	3640	130	225823	225827																																																																																																																																																																																																							
<table><tr><th colspan="4">Spot</th><th colspan="4">Medium</th><th colspan="4">Flood</th><th colspan="4">Wideflood</th></tr><tr><th>m</th><th>Ø</th><th>2000lm</th><th>3500lm</th><th>Lux</th><th>Lux</th><th>m</th><th>Ø</th><th>2000lm</th><th>3500lm</th><th>Lux</th><th>Lux</th><th>m</th><th>Ø</th><th>2000lm</th><th>3500lm</th><th>Lux</th><th>Lux</th></tr><tr><td>1</td><td>0,28</td><td>13567</td><td>23591</td><td></td><td></td><td>1</td><td>0,42</td><td>7552</td><td>13133</td><td></td><td></td><td>1</td><td>0,74</td><td>4760</td><td>8277</td><td></td><td></td></tr><tr><td>2</td><td>0,56</td><td>3392</td><td>5898</td><td></td><td></td><td>2</td><td>0,84</td><td>1888</td><td>3283</td><td></td><td></td><td>2</td><td>1,42</td><td>1190</td><td>2069</td><td></td><td></td></tr><tr><td>3</td><td>0,84</td><td>1507</td><td>2621</td><td></td><td></td><td>3</td><td>1,25</td><td>839</td><td>1459</td><td></td><td></td><td>3</td><td>2,18</td><td>529</td><td>920</td><td></td><td></td></tr><tr><td>4</td><td>1,12</td><td>848</td><td>1474</td><td></td><td></td><td>4</td><td>1,70</td><td>472</td><td>821</td><td></td><td></td><td>4</td><td>2,91</td><td>298</td><td>517</td><td></td><td></td></tr></table>					Spot				Medium				Flood				Wideflood				m	Ø	2000lm	3500lm	Lux	Lux	m	Ø	2000lm	3500lm	Lux	Lux	m	Ø	2000lm	3500lm	Lux	Lux	1	0,28	13567	23591			1	0,42	7552	13133			1	0,74	4760	8277			2	0,56	3392	5898			2	0,84	1888	3283			2	1,42	1190	2069			3	0,84	1507	2621			3	1,25	839	1459			3	2,18	529	920			4	1,12	848	1474			4	1,70	472	821			4	2,91	298	517			<table><tr><th colspan="4">2000lm</th><th colspan="4">3500lm</th></tr><tr><td>m</td><td>Ø</td><td>Lux</td><td>Lux</td><td>m</td><td>Ø</td><td>Lux</td><td>Lux</td><td>m</td><td>Ø</td><td>Lux</td><td>Lux</td><td>m</td><td>Ø</td><td>Lux</td><td>Lux</td></tr><tr><td>1</td><td>0,28</td><td>13567</td><td>23591</td><td>1</td><td>0,42</td><td>7552</td><td>13133</td><td>1</td><td>0,74</td><td>4760</td><td>8277</td><td>1</td><td>1,19</td><td>2302</td><td>4002</td></tr><tr><td>2</td><td>0,56</td><td>3392</td><td>5898</td><td>2</td><td>0,84</td><td>1888</td><td>3283</td><td>2</td><td>1,42</td><td>1190</td><td>2069</td><td>2</td><td>2,38</td><td>757</td><td>1001</td></tr><tr><td>3</td><td>0,84</td><td>1507</td><td>2621</td><td>3</td><td>1,25</td><td>839</td><td>1459</td><td>3</td><td>2,18</td><td>529</td><td>920</td><td>2,5</td><td>2,97</td><td>368</td><td>640</td></tr><tr><td>4</td><td>1,12</td><td>848</td><td>1474</td><td>4</td><td>1,70</td><td>472</td><td>821</td><td>4</td><td>2,91</td><td>298</td><td>517</td><td>3</td><td>3,56</td><td>256</td><td>250</td></tr></table>					2000lm				3500lm				m	Ø	Lux	Lux	m	Ø	Lux	Lux	m	Ø	Lux	Lux	m	Ø	Lux	Lux	1	0,28	13567	23591	1	0,42	7552	13133	1	0,74	4760	8277	1	1,19	2302	4002	2	0,56	3392	5898	2	0,84	1888	3283	2	1,42	1190	2069	2	2,38	757	1001	3	0,84	1507	2621	3	1,25	839	1459	3	2,18	529	920	2,5	2,97	368	640	4	1,12	848	1474	4	1,70	472	821	4	2,91	298	517	3	3,56	256	250					
Spot				Medium				Flood				Wideflood																																																																																																																																																																																																				
m	Ø	2000lm	3500lm	Lux	Lux	m	Ø	2000lm	3500lm	Lux	Lux	m	Ø	2000lm	3500lm	Lux	Lux																																																																																																																																																																																															
1	0,28	13567	23591			1	0,42	7552	13133			1	0,74	4760	8277																																																																																																																																																																																																	
2	0,56	3392	5898			2	0,84	1888	3283			2	1,42	1190	2069																																																																																																																																																																																																	
3	0,84	1507	2621			3	1,25	839	1459			3	2,18	529	920																																																																																																																																																																																																	
4	1,12	848	1474			4	1,70	472	821			4	2,91	298	517																																																																																																																																																																																																	
2000lm				3500lm																																																																																																																																																																																																												
m	Ø	Lux	Lux	m	Ø	Lux	Lux	m	Ø	Lux	Lux	m	Ø	Lux	Lux																																																																																																																																																																																																	
1	0,28	13567	23591	1	0,42	7552	13133	1	0,74	4760	8277	1	1,19	2302	4002																																																																																																																																																																																																	
2	0,56	3392	5898	2	0,84	1888	3283	2	1,42	1190	2069	2	2,38	757	1001																																																																																																																																																																																																	
3	0,84	1507	2621	3	1,25	839	1459	3	2,18	529	920	2,5	2,97	368	640																																																																																																																																																																																																	
4	1,12	848	1474	4	1,70	472	821	4	2,91	298	517	3	3,56	256	250																																																																																																																																																																																																	



Luminous flux and connected electrical load are subject to an initial tolerance of +/- 5%. Tolerance of colour temperature: +/-150 K. Tolerance of CRI +/- 1,5. Values apply to an ambient temperature of 25°C.